

Text after `title=` is typeset as the caption of the figure or table. You can type any text you want. The figure captions are set up with `\setupcaptions` (see [paragraph 42.4](#)).

The brace pair is used for defining the figure and addressing the file names of external figures.

In the next example you see how `Hasselt` is defined within the brace pair to show you the function of `\startplacefigure ... \stopplacefigure`.

Hasselt

**Figure 9.2** The boundaries of Hasselt

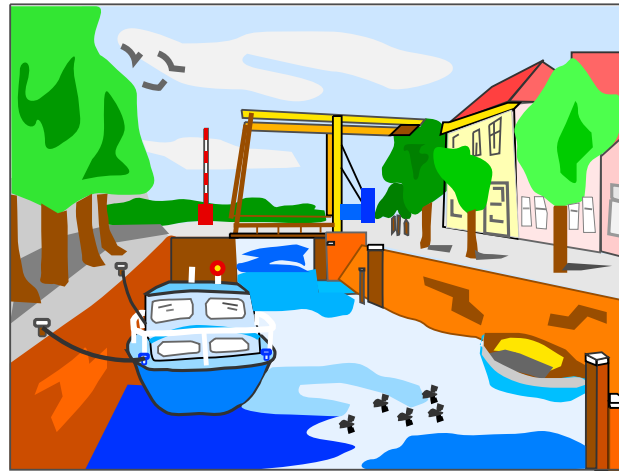
```
\startplacefigure
  [title={The boundaries of Hasselt}]
  {\framed[width=.55\makeupwidth,offset=5pt,align={lohi,center}]{\tfb Hasselt}}
\stopplacefigure
```

However, your images are often created using specialized programs for image processing and photos are — after scanning — improved in packages for this purpose. Then the images are available as files. `CONTEXT` supports image file types like `JPG`, `PNG` and (pages from) `PDF` files as well as `METAPOST` output (`MP` files). With the latest `CONTEXT` versions you also can include `svg` (scalable vector graphics) without depending on external software to convert them to `PDF`. Those are processed by `METAPOST` on the fly. For further information see [\*svg in context and metafun xl\*](#) manual and the [\*CONTEXT WIKI\*](#) about `svg` support in `CONTEXT`.

In [figure 9.3](#) you see a photo and a graphic combined into one figure.



a bitmap picture



a vector graphic

**Figure 9.3** The Hasselt Canals

[Contents](#)

[Index](#)

[Command Index](#)

[Command Definitions](#)

[Colofon](#)

[Exit](#)

[Search](#)

[Go back](#)